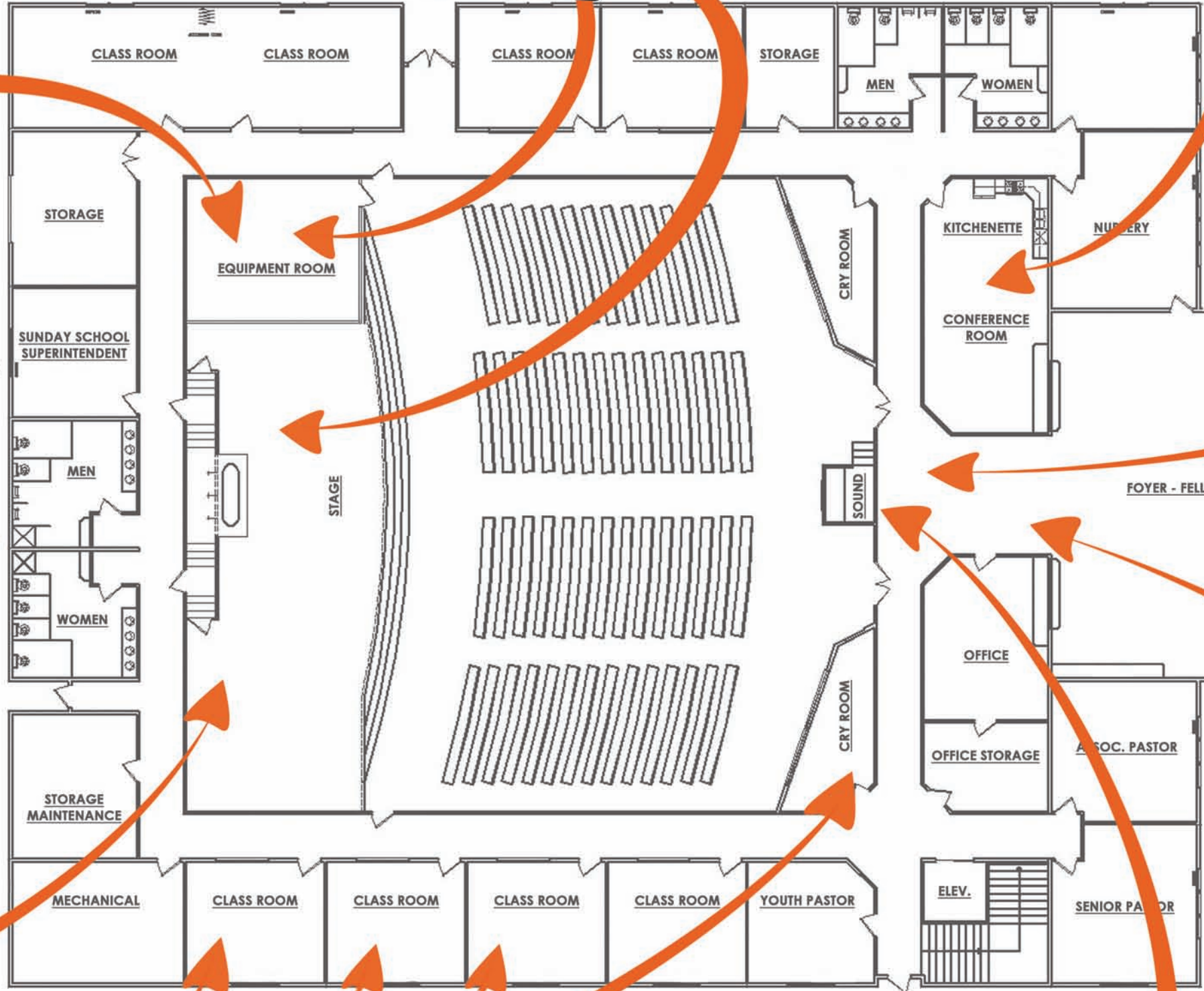


# CHURCH LAYOUT



**ETA-20SH**  
Advanced Spike/ Surge & EMI/RFI



Cover the Praise Band on stage at 6 stage positions up top

**PD8**  
Protection on all three legs of power, Watchdog Circuitry



**ETA-ECS3**  
Turn your equipment on/off in stages to prevent damaging speakers or in-rush issues, with one switch!



**ETA-ECMRACEWY6**  
Mount on truss and connect to lighting.



**ETA-ECM20M**  
20A Electrical Control Module for use with Raceway Housing



**ETA-15SH**  
Advanced Spike/ Surge & EMI/RFI Filtering for Pastor's PC at lectern & classroom displays



**ETA-15SH**  
Advanced Spike/ Surge & EMI/RFI Filtering for lobby for Greeting View Digital Signage



**ECS-3KSWM**  
Remote turn on/off for sequencers: ETA-ECS3 and ETA-ECS204 • 4 wire interface maintained connection



**ETA-ECS6RM**  
Links to ETA-20SH & ETA-15SH units and/or Raceway

